

# MT 1440 TIER IV

MT SERIES PREMIERE CONSTRUCTION telescopic handler



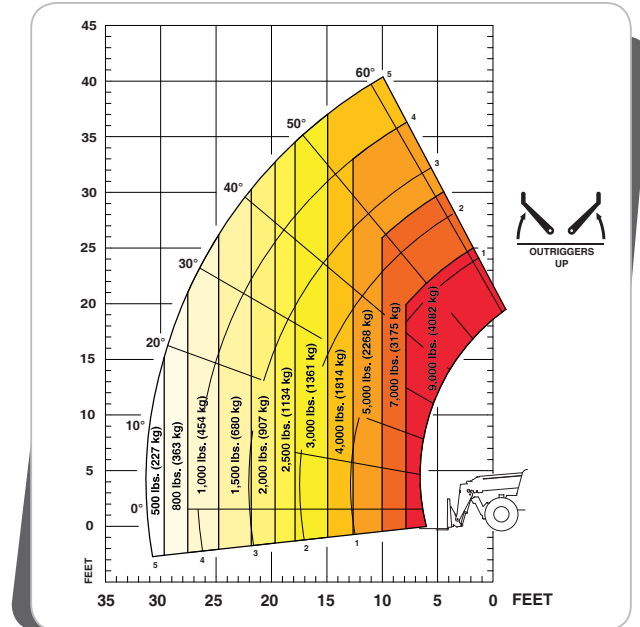
## KEY FEATURES

- > Perkins 100 HP (75 kW) Final Tier IV Engine
- > 9,000 lbs. (4082 kg) Capacity
- > 44 ft. 4 in (13.53 m) Lift Height
- > New Unit Utilizes DEF for Tier IV
- > Standard Unit with Enclosed Cab with Vinyl Seat, Heat and optional A/C
- > Standard Stabilizers
- > Frame Leveling
- > JSM Joystick Controls
- > 4-Wheel Drive / 4-Wheel Steer
- > Variety of Attachments

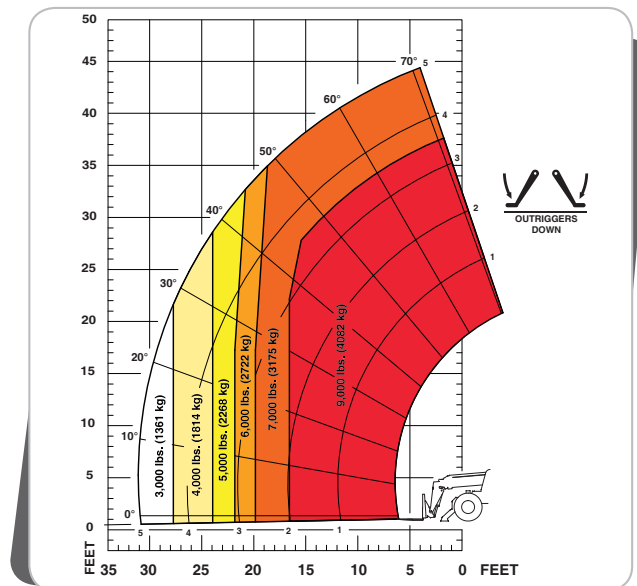
# MT 1440 SERIES PREMIERE CONSTRUCTION TELESCOPIC HANDLER SPECIFICATIONS

MT 1440		
KEY PERFORMANCE	Lift Capacity (kg)	9,000 lbs. (4082)
	Maximum Lift Height (m)	44'4" (13.53 m)
	Capacity at Maximum Lift Height with Stabilizers (kg)	7,000 lbs. (3175)
	Maximum Forward Reach (m)	31'0" (9.46 m)
	Capacity at Maximum Forward Reach with Stabilizers (kg)	3,000 lbs. (1361)
ENGINE	Break-out Force with Bucket (daN)	16,636 lb/f (7,400)
	Manufacturer	Perkins
	Aspiration	Turbocharged
	Power (kW) @ rpm	100 hp (75) @ 2500
	Model	854F E34TA Tier IV
COMPONENTS	Maximum Torque (Nm) @ 1400 rpm	317 ft.-lbs. (430)
	Transmission	Powershuttle, 4 Wheel Drive
	Maximum Travel Speed (km/hr)	21.7 mph (35)
	Selective Steering	2-Wheel, 4-Wheel, Crab
	Service Brake	Multiple disc brakes, hydraulic front and rear axles
HYDRAULIC SYSTEM	Parking Brake	Automatic & Manual
	Pump Type	Dual Gear
	Total Capacity (L/min)	45 gpm (170)
GENERAL SPECIFICATIONS	System Pressure (bar)	3916 psi (270)
	A. Front Wheel Center to Carriage (m)	6'2" (1.90)
	B. Wheelbase (m)	10'0" (3.07)
	C. Rear Wheel Center to Rear Face (m)	3'9" (1.16)
	D. Length - Without Forks (m)	20'2" (6.13)
	E. Ground Clearance (mm)	14.4" (367)
	F. Overall Width of Cab (m)	35" (0.89)
	H. Overall Width (to Outside of Tires) (m)	7'9" (2.37)
	I. Overall Width (Stabilizers Lowered) (m)	12'6" (3.79)
	J. Overall Height (m)	8'1" (2.45)
	Approximate Weight (kg)	23,931 lbs. (10,855)
	Outside Turning Radius (m)	13'1" (3.99)
CAPACITIES	Standard Tires	440/80-24
	Fuel Tank Capacity (L)	37 gal. (140)
	DEF Tank Capacity (L)	3.2 gal. (12)

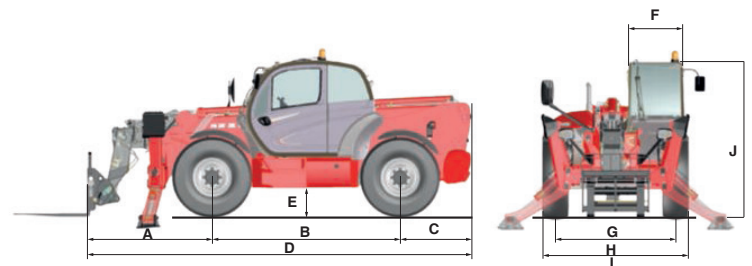
## Machine on Tires with Forks



## Machine on Stabilizers with Forks



## DIMENSIONS REFERENCE DIAGRAMS



This publication in no way constitutes an offer and the company reserves the right to alter specifications without notice.

